

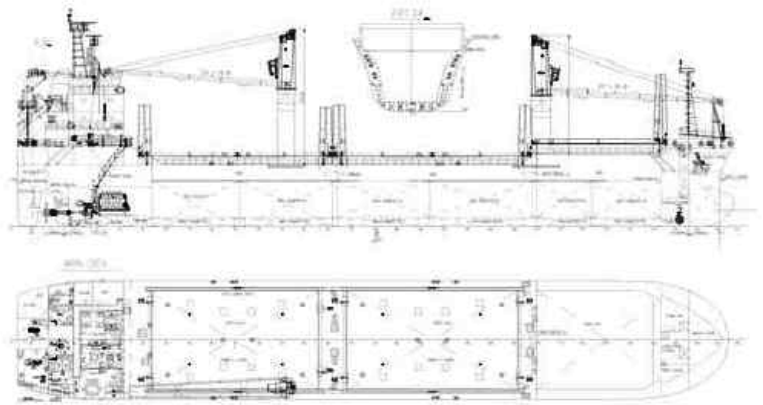
SDS Navigation srl

M/v JZY HULL 810

Technical Specification



Builders: Jiangsu Yangzijiang Shipyard – China
Delivery: June 2010
Type: Multipurpose Cargo Vessel
Classification: RINA AUT, UMS; ICE CLASS 1A
Flag: Italian
Call Sign: -
Port of Registry: Napoli
IMO No.: -
MMSI No.: -
Class No.: -
GSM Mobile: -
Mini-M Ph. No.: -
Mini-M Fax No.: -
Features: Strengthened for heavy cargoes;
 Equipped for dangerous goods according to Solas II-2



Main Features:

Length o.a. 108,20 m.
Length I.I 103,90 m.
Beam mld. 18,20 m
Depth to M. Deck 9,00 m.
Summer Draft 6,992 m .
Height above Keel -
Deadweight 7.600 tons
TPC -
Gross Tonnage 5.630
Net Tonnage 2.877

Performance/Consumption*:

Service Speed abt. 13 Kn on abt. 12 Mt
 HFO 380
In Port + Gear 3,0 Mt MGO a Day
In Port - Gear 1,0 Mt MGO a Day
Boiler Fuel consumption in Port 1,0 Mt MGO a Day

* Consumption data to be checked once operative.

Tank Capacities:

HFO	400 Mt	Freshwater	100 Mt
MGO	60 Mt	Ballastwater	2.200 Mt

Nautical Equipment:

GMDSS	Fully Fitted
Radars	2
Echo Sounder	1
Satcom B+C	1
Gyro	1
Autopilot	1
AIS	1
GPS	2
Mini-M	Yes
GSM mobile	1

Hold Dimensions/Capacities:

Hold	Dimension	Capacity
Hold 1	18,80 x 15,00 x 11,00 m.	2.710 CBM / 95.750 CBFT
Hold 2	29,00 x 15,00 x 9,00 m.	3.900 CBM / 137.750 CBFT
Hold 3	28,00 x 15,00 x 9,00 m.	3.638 CBM / 128.500 CBFT
Total:		10.248 CBM / 362.000 CBFT

Hold Format Hold 1 in narrowing in fore Part to 6,40 m
 Hold 2 is fully box shaped
 Hold 3 in narrowing in aft Part to 8,00 m

Cargo:

Vessel is fitted for/with IMO Cargo.

Machinery:

Main Engine MAK Diesel, Type 6M32C – 3.000 KW at 600 RPM
Auxiliary Engine 2 x Lindenberg Diesel Generator – Output: 365 KW at 1.800 RPM
Emergency Engine 1 x Lindenberg Diesel Generator – Output: 265 KW at 1.800 RPM
Shaft Generator 450 KW / 1.800 RMP
Bow Thruster 350 KW / 1.500 RMP
Freshwater Gen. 10,0 Mt a Day
Propeller Controllable Pitch Propeller

Hatches:

Hatch 1 17,50 x 15,20 m.
Hatch 2 25,90 x 15,20 m.
Hatch 3 25,90 x 15,20 m.
Hatches opening System Steel Folding hatch covers with integrated hydraulic opening system
 TTS HUA HAI

Deck Strength:

Tanktop 15,00 Mt/m²
Hatchcover 2,00 Mt/m²

Gear:

Type 2 x Mac Gregor Cranes
SWL Max. 25 Mt
Situated Starboard side
Combinable N/A

WWW.SDSNAVIGATION.COM

Note:

Speed and Consumption figures are calculated basis maximum Beaufort 2, no swell and no adverse currents. Intake is always subject to vessel's stability, trim, permissible weights and is subject to regulations of visibility. Lifting capacity of vessel's cranes is subject to vessel's stability and can be depend on cargo/ballast on board. All details are about believed to be correct but given without guarantee and they must be not used as basis for charterparties or contracts without SDS Navigation's explicit written authority.