

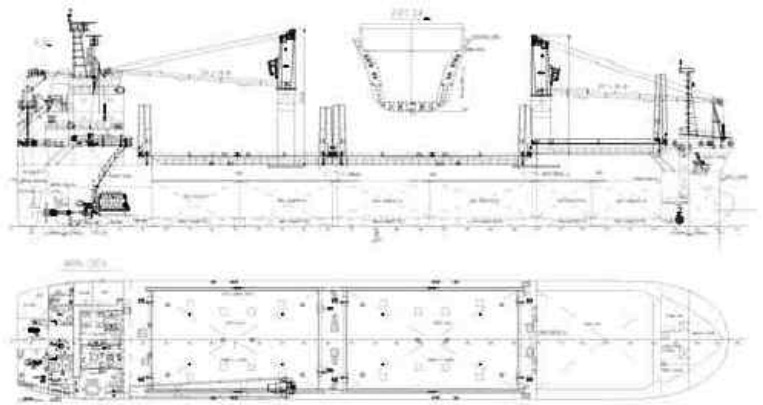
# SDS Navigation srl

## M/v JZY HULL 808

### Technical Specification



**Builders:** Jiangsu Yangzijiang Shipyard – China  
**Delivery:** March 2010  
**Type:** Multipurpose Cargo Vessel  
**Classification:** RINA AUT, UMS; ICE CLASS 1A  
**Flag:** Italian  
**Call Sign:** -  
**Port of Registry:** Napoli  
**IMO No.:** -  
**MMSI No.:** -  
**Class No.:** -  
**GSM Mobile:** -  
**Mini-M Ph. No.:** -  
**Mini-M Fax No.:** -  
**Features:** Strengthened for heavy cargoes;  
Equipped for dangerous goods according to Solas II-2



### Main Features:

**Length o.a.** 108,20 m.  
**Length I.I** 103,90 m.  
**Beam mld.** 18,20 m  
**Depth to M. Deck** 9,00 m.  
**Summer Draft** 6,992 m.  
**Height above Keel** -  
**Deadweight** 7.600 tons  
**TPC** -  
**Gross Tonnage** 5.630  
**Net Tonnage** 2.877

### Performance/Consumption\*:

**Service Speed** abt. 13 Kn on abt. 12 Mt  
HFO 380  
**In Port + Gear** 3,0 Mt MGO a Day  
**In Port - Gear** 1,0 Mt MGO a Day  
**Boiler Fuel consumption in Port** 1,0 Mt MGO a Day

\* Consumption data to be checked once operative.

### Tank Capacities:

<b>HFO</b>	400 Mt	<b>Freshwater</b>	100 Mt
<b>MGO</b>	60 Mt	<b>Ballastwater</b>	2.200 Mt

### Nautical Equipment:

<b>GMDSS</b>	Fully Fitted
<b>Radars</b>	2
<b>Echo Sounder</b>	1
<b>Satcom B+C</b>	1
<b>Gyro</b>	1
<b>Autopilot</b>	1
<b>AIS</b>	1
<b>GPS</b>	2
<b>Mini-M</b>	Yes
<b>GSM mobile</b>	1

### Hold Dimensions/Capacities:

Hold	Dimension	Capacity
<b>Hold 1</b>	18,80 x 15,00 x 11,00 m.	2.710 CBM / 95.750 CBFT
<b>Hold 2</b>	29,00 x 15,00 x 9,00 m.	3.900 CBM / 137.750 CBFT
<b>Hold 3</b>	28,00 x 15,00 x 9,00 m.	3.638 CBM / 128.500 CBFT
<b>Total:</b>		10.248 CBM / 362.000 CBFT

**Hold Format** Hold 1 in narrowing in fore Part to 6,40 m  
Hold 2 is fully box shaped  
Hold 3 in narrowing in aft Part to 8,00 m

### Cargo:

Vessel is fitted for/with IMO Cargo.

### Machinery:

**Main Engine** MAK Diesel, Type 6M32C – 3.000 KW at 600 RPM  
**Auxiliary Engine** 2 x Lindenberg Diesel Generator – Output: 365 KW at 1.800 RPM  
**Emergency Engine** 1 x Lindenberg Diesel Generator – Output: 265 KW at 1.800 RPM  
**Shaft Generator** 450 KW / 1.800 RMP  
**Bow Thruster** 350 KW / 1.500 RMP  
**Freshwater Gen.** 10,0 Mt a Day  
**Propeller** Controllable Pitch Propeller

### Hatches:

**Hatch 1** 17,50 x 15,20 m.  
**Hatch 2** 25,90 x 15,20 m.  
**Hatch 3** 25,90 x 15,20 m.  
**Hatches opening System** Steel Folding hatch covers with integrated hydraulic opening system  
TTS HUA HAI

### Deck Strength:

**Tanktop** 15,00 Mt/m<sup>2</sup>  
**Hatchcover** 2,00 Mt/m<sup>2</sup>

### Gear:

**Type** 2 x Mac Gregor Cranes  
**SWL** Max. 25 Mt  
**Situated** Starboard side  
**Combinable** N/A

### Note:

Speed and Consumption figures are calculated basis maximum Beaufort 2, no swell and no adverse currents. Intake is always subject to vessel's stability, trim, permissible weights and is subject to regulations of visibility. Lifting capacity of vessel's cranes is subject to vessel's stability and can be depend on cargo/ballast on board. All details are about believed to be correct but given without guarantee and they must be not used as basis for charterparties or contracts without SDS Navigation's explicit written authority.